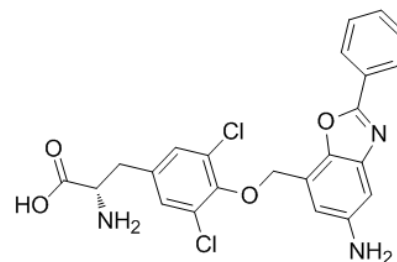


Product Name : JPH203
Cat. No. : PC-42276
CAS No. : 1037592-40-7
Molecular Formula : C₂₃H₁₉Cl₂N₃O₄
Molecular Weight : 472.32066
Target : Apoptosis Inducer
Solubility : 10 mM in DMSO



Biological Activity

Nanvuranlat (JPH203, KYT-0353) is a potent, selective L-type amino acid transporter 1 (**LAT1, SLC7A5**) inhibitor with IC₅₀ of 60 nM (leucine uptake inhibition), but not LAT2.

JPH203 inhibits cell growth in HT-29 cells with IC₅₀ of 4.1 μM, also inhibits (14)C-leucine uptake in mouse renal proximal tubule cells expressing LAT1 and inhibits cell growth with IC₅₀ of 0.14 and 16.4 μM, respectively.

JPH203 significantly inhibits HT-29 tumor growth in vivo.

References

Oda K, et al. *Cancer Sci.* 2010 Jan;101(1):173-9.

Yun DW, et al. *J Pharmacol Sci.* 2014;124(2):208-17.

Wempe MF, et al. *Drug Metab Pharmacokinet.* 2012;27(1):155-61.

Rosilio C, et al. *Leukemia.* 2015 Jun;29(6):1253-66.

Caution: Product has not been fully validated for medical applications. Lab Use Only!

E-mail: tech@probechem.com